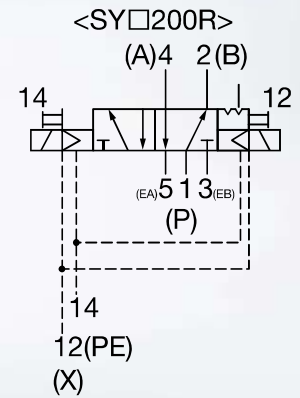
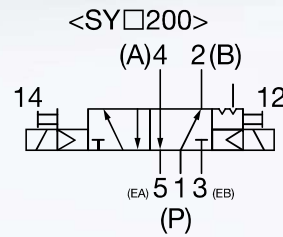
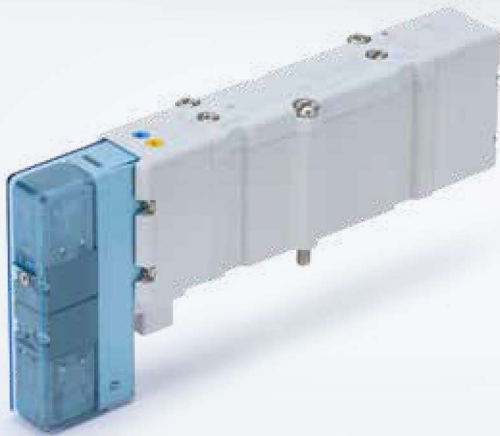


Double solenoid valves with detent

SY3200-X25

SY5200-X25

SY7200-X25



Application

- ▶ The intended use of this valve is to control an actuator
- ▶ Rubber-sealed valve with detent on both sides (according to EN ISO 13849-2)
- ▶ Main spool is held in the respective secured position by a mechanical detent
- ▶ Complies with basic and proven safety principles according to EN ISO 13849-2